

## Tracking Service Samples for Java

This folder contains sample code for accessing Tracking services via the java jersey client library. Samples are provided for these operations:

- GetTrackingSummary
- GetTrackingDetails
- GetSignatureImage
- GetDeliveryConfirmationCertificate

### About These Samples

- These samples are meant to accompany the [Developer Program Getting Started Guide](#). They will help you validate that your Developer Program account is set up correctly, and will help you create your first Tracking request.

### Conventions

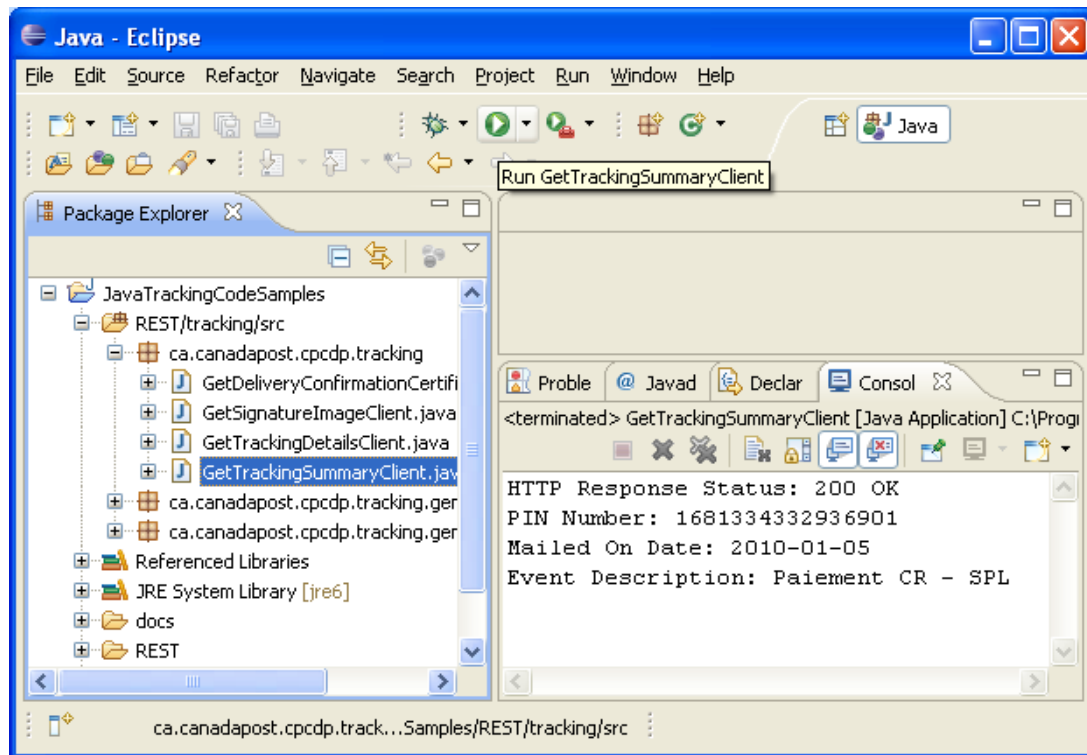
- **<install\_directory>** - This is the file folder where you have extracted these code samples into. Examples may include: CPCWS\_Java\_Samples; CPCWS\_DotNet\_Samples, or CPCWS\_Tracking\_PHP\_Samples among others.

### Prerequisites

- You must have a valid Developer Program account.
- You must be signed up to use Developer Program.
- Requires the Java™ Platform, Standard Edition 6 Development Kit (JDK™6) or newer (for more information, go to <http://www.oracle.com/technetwork/java/javase/downloads/index.html> ). If your version of JDK is older than 6.0, you must install newer version.
  - Follow the instructions on the Sun Java web site to install the JDK
- Also requires Eclipse version 3.6 or newer.
  - Follow the instructions on the Eclipse website to install Eclipse. <http://www.eclipse.org>

### Running the Samples

- 1) Edit **<install\_directory>\user.properties** in the folder of extracted package.
  - a) Update this file with your Developer Program username, password and customer number.
- 2) Import Java Project from extracted samples package.
  - a) From the main menu bar, select **File → Import...**. The Import wizard opens.
  - b) Select **General > Existing Project into Workspace** and click **Next**.
  - c) Choose **Select root directory** and click the associated **Browse** to locate the directory of the extracted samples and select the **<install\_directory>** directory.
  - d) Under **Projects** select the project or projects which you would like to import.
  - e) Click **Finish** to start the import.
- 3) Select **GetTrackingSummaryClient** java file and Run as Java Application. View the output in the Eclipse console



4) Experiment with the other samples.